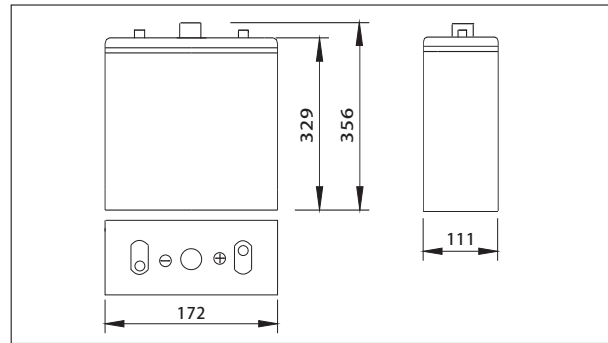


NP2-200(2V200AH)



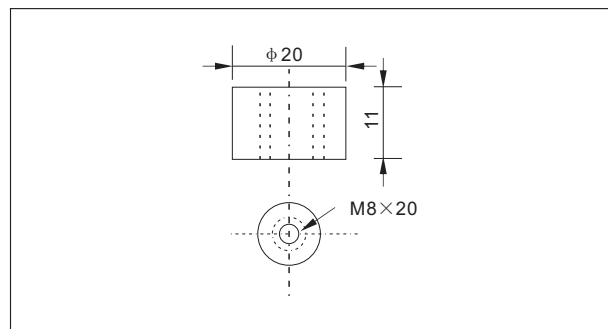
Outer dimensions (mm)



Specifications

Nominal Voltage		2 V
Rated capacity (10 hour rate)		200 Ah
Dimensions	Total Height	356 mm (14.0 inches)
	Height	329 mm (13.0 inches)
	Length	172 mm (6.77 inches)
	Width	111 mm (4.37 inches)
Weight Approx		13.5Kg (29.7lbs)

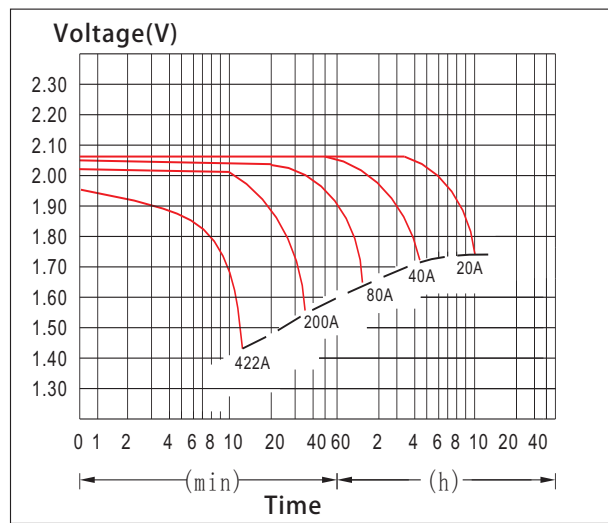
Terminal Type (mm)



Characteristics

Capacity 25°C(77°F)	10 hour rate(20 A)	200 AH
	5 hour rate(32 A)	160 AH
	1 hour rate(120 A)	120 AH
	1.5 hour discharge to 1.75 V	80 A
Internal Resistance	Full charged Battery at 25°C(77°F)	0.8mΩ
Capacity affected by Temperature (10hour rate)	40°C(104°F)	102%
	25°C(77°F)	100%
	0°C(32°F)	85%
	-15°C(5°F)	65%
Self-Discharge at 25°C(77°F)	Capacity after 3 month storage	91%
	Capacity after 6 month storage	82%
	Capacity after 12 month storage	64%
Terminal		T20
Charge (constant Voltage)	Cycle	Initial Charging Current less than 50 A Voltage 2.35-2.40V
	Float	Voltage 2.25-2.30V

Discharge Curves 25°C(77°F)



Constant Current(Amp) and Constant Power(Watt) Discharge Table at 25°C(77°F)

Time		5min	10min	15min	30min	1h	2h	3h	4h	5h	8h	10h	20h
1.60V	A	584	422	340	228	120	70.0	51.4	40.0	33.0	23.4	21.0	11.3
	W	1004	751	608	409	216	128	95.3	75.0	62.5	44.7	40.4	22.0
1.70V	A	556	381	320	218	113	66.8	50.0	39.0	32.4	22.8	20.6	11.0
	W	990	709	598	408	213	128	96.5	75.6	63.0	44.5	40.3	21.5
1.75V	A	512	341	280	204	109	65.2	48.8	38.4	32.0	22.6	20.2	11.0
	W	932	646	533	391	211	126	94.8	74.9	62.5	44.3	39.8	21.7
1.80V	A	448	321	260	188	106	63.6	47.6	37.8	31.2	22.0	20.0	10.8
	W	838	617	500	363	205	124	93.5	74.4	61.5	43.5	39.6	21.4
1.85V	A	396	301	240	168	102	62.0	46.0	36.8	30.4	21.4	19.0	10.2
	W	748	581	466	328	200	122	91.1	73.0	60.5	42.7	38.2	20.6

NOTE: FOR REFERENCE ONLY