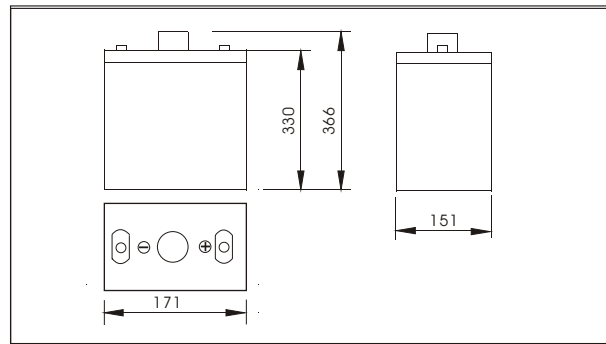


NP2-300(2V300AH)



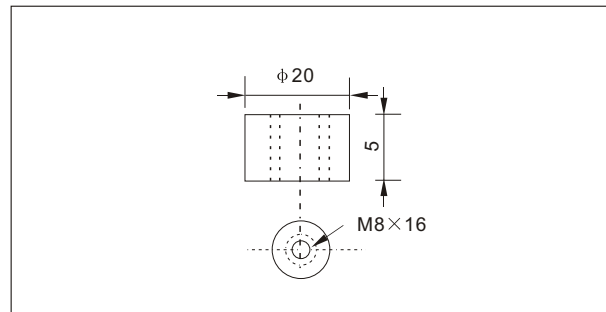
Outer dimensions (mm)



Specifications

Nominal Voltage		2 V
Rated capacity (10 hour rate)		300 Ah
Dimensions	Total Height	366mm (14.4inches)
	Height	330mm (13.0inches)
	Length	171mm (6.7inches)
	Width	151mm (5.9inches)
Weight Approx		18.8Kg (41.4lbs)

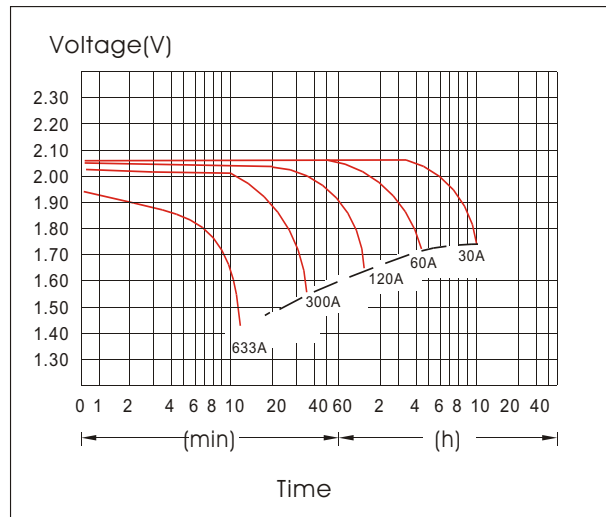
Terminal Type (mm)



Characteristics

Capacity 25°C(77°F)	10 hour rate(30 A)	300 AH
	5 hour rate(48A)	240 AH
	1 hour rate(180A)	180 AH
	1.5 hour discharge to 1.75 V	120 A
Internal Resistance	Full charged Battery at 25°C(77°F)	0.7m Ω
Capacity affected by Temperature (10hour rate)	40°C(104°F)	102%
	25°C(77°F)	100%
	0°C(32°F)	85%
	-15°C(5°F)	65%
Self-Discharge at 25°C(77°F)	Capacity after 3 month storage	91%
	Capacity after 6 month storage	82%
	Capacity after 12 month storage	64%
Terminal		T20
Charge (constant Voltage)	Cycle	Initial Charging Current less than 120 A Voltage 2.35-2.40V
	Float	Voltage 2.25-2.30V

Discharge Curves 25°C(77°F)



Constant Current(Amp) and Constant Power(Watt) Discharge Table at 25°C(77°F)

Time		5min	10min	15min	30min	1h	2h	3h	4h	5h	8h	10h	20h
1.60V	A	961	633	510	342	180	105.0	77.1	60.0	49.5	35.1	31.5	17
	W	1653	1127	912	613	324	192	143.0	112.5	93.8	67.0	60.6	33
1.70V	A	931	571	481	327	169	100.2	75.0	58.5	48.6	34.2	30.9	16.5
	W	1656	1063	896	612	319	192	144.8	113.4	94.4	66.7	60.5	32.3
1.75V	A	900	511	420	306	164	97.8	73.2	57.6	48.0	33.9	30.3	16.5
	W	1639	969	799	587	316	189	142.2	112.3	93.8	66.4	59.8	32.5
1.80V	A	868	482	391	282	158	95.4	71.4	56.7	46.8	33.0	30.0	16.2
	W	1622	925	750	545	307	186	140.3	111.6	92.2	65.2	59.4	32.2
1.85V	A	839	451	361	252	153	93.0	69.0	55.2	45.6	32.1	28.5	15.3
	W	1585	871	700	491	300	183	136.6	109.6	90.7	64.1	57.3	30.9

NOTE: FOR REFERENCE ONLY